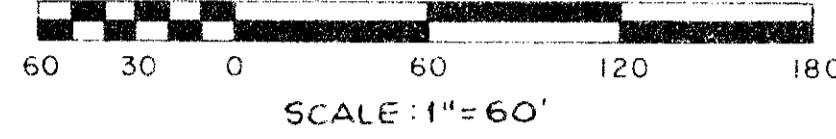


PALM CHASE LAKES (A P.U.D.)

A REPLAT OF MILITARY CITY, PLAT BOOK 13, PAGE 44 AND A REPLAT OF TRACTS 49, 50, 59, AND 60 OF THE SUBDIVISION OF SECTION 26, TOWNSHIP 45 SOUTH, RANGE 42 EAST, PLAT BOOK 6, PAGE 26

PALM BEACH COUNTY, FLORIDA

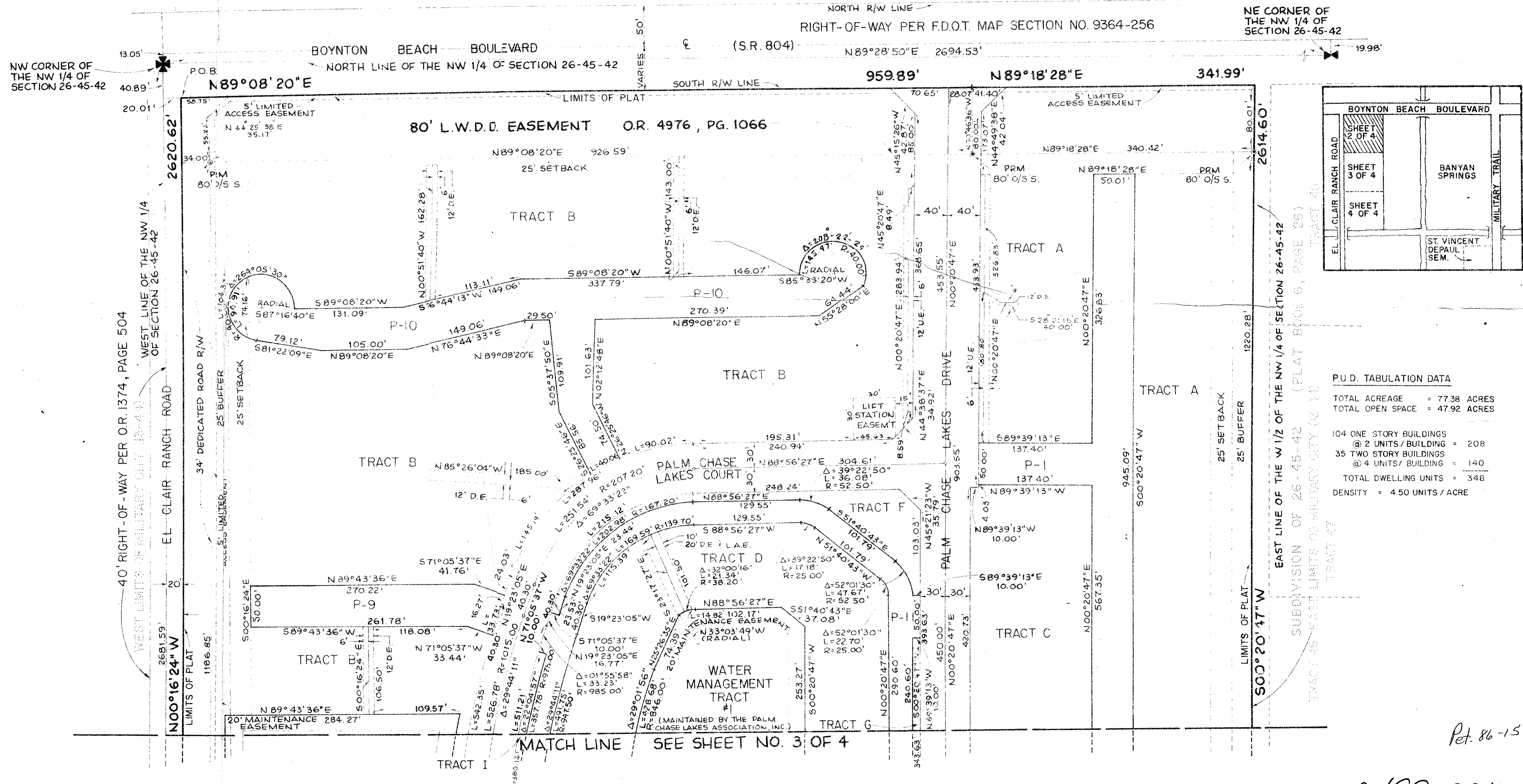
THIS INSTRUMENT PREPARED BY JAMES E. PARK, P.L.S.
WILLIAMS, HATFIELD & STONER, INC. - ENGINEERS-PLANNERS-SURVEYORS
1325 SOUTH CONGRESS AVENUE, SUITE 118, BOYNTON BEACH, FLORIDA 33435



SHEET 2 OF 4

19

26/11/12
Palm Chase Lakes
57 19
1106
33436
(A P.U.D.)



P.U.D. TABULATION DATA

TOTAL ACREAGE	= 77.38 ACRES
TOTAL OPEN SPACE	= 47.92 ACRES
104 ONE STORY BUILDINGS @ 2 UNITS / BUILDING	= 208
35 TWO STORY BUILDINGS @ 4 UNITS / BUILDING	= 140
TOTAL DWELLING UNITS	= 348
DENSITY	= 4.50 UNITS / ACRE

Pet. 86-15

0499-001

PALM CHASE LAKES 57/19